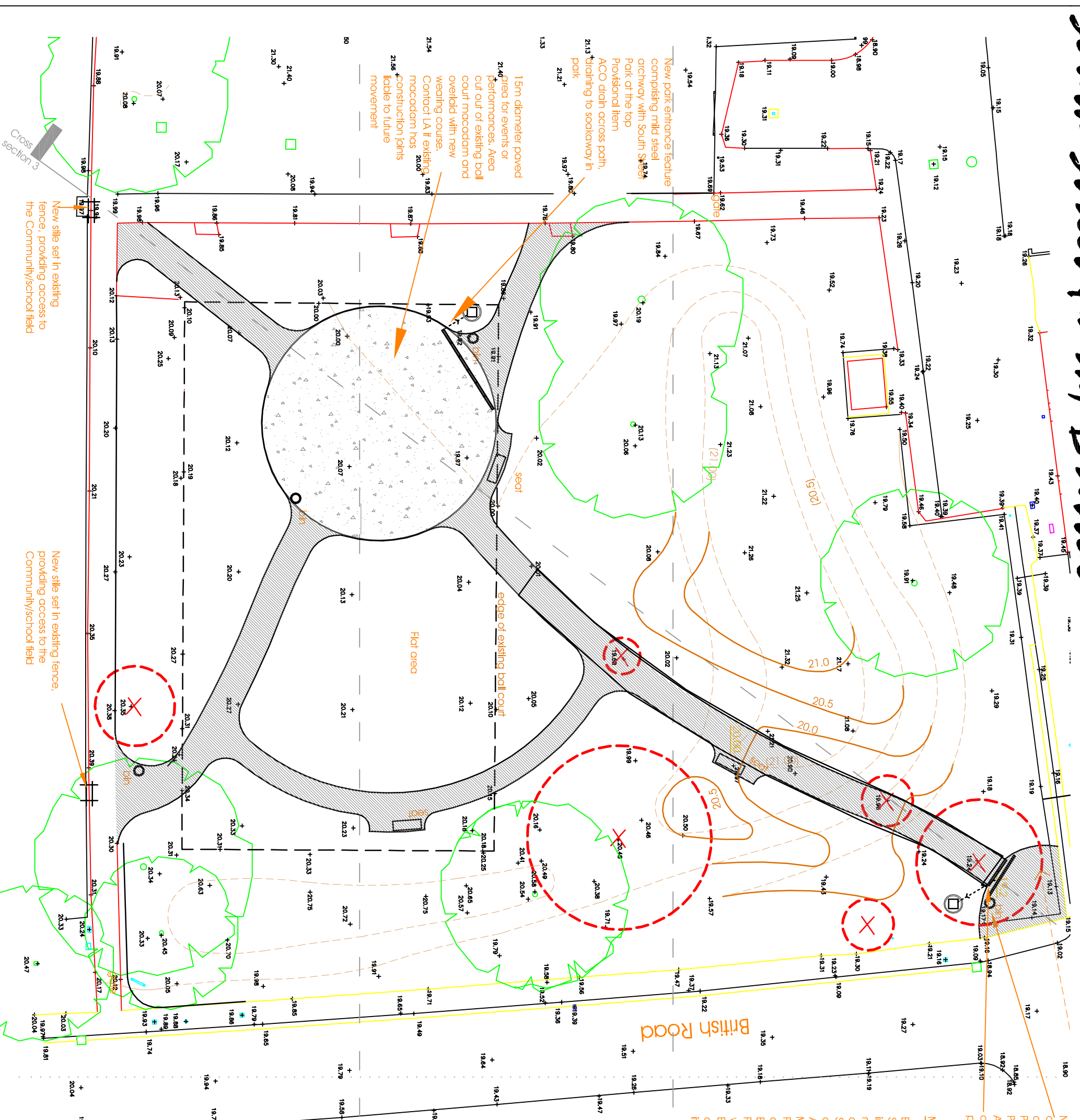


# South Street Park, Bristol

378\_001



New park entrance feature  
Comprising mild steel  
archway with South Street  
Park at the top  
Provisional item  
ACO drain across path,  
ditching to soakaway in  
park

**Materials**

Bins: David Ogilvie Greenan  
Seats: David Ogilvie OE seat  
In Dark Green, surface  
mounted using 'Conex'  
anti-tamper nuts  
Soakaway: 1050mm  
diameter pcc  
ACO: 125mm deep  
MiniPark Drain or similar  
Path edges: pre-cast  
concrete 50x150BN  
Bullnosed (cut to form radii)  
Paths: macadam with 6mm  
wearing course  
Blitchem Colortex Buff over  
central circle (provisional  
item)

Cross section 2

Cross section 1

New stile set in existing  
fence, providing access to  
the Community/school field

New stile set in existing fence,  
providing access to the  
Community/school field

Client	SPG/Bristol City Council
Project No.	South Street Park
Project Name	Landscape proposals Phase 1
Drawn by	13.12.2011
Checked by	01
Date	01

Do not scale off this drawing. Check dimensions on file.

**afia ltd**  
 Chartered Landscape Architects  
 20 Clarendon Road, Knowle, Bristol, BS4 2JP  
 Tel: 0117 971 3556  
 emil@afia.co.uk www.afia.co.uk

